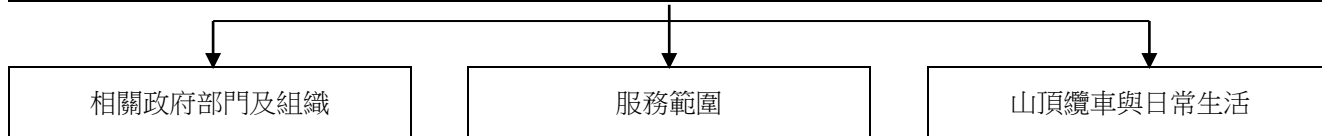


山頂纜車



相關字眼
 山頂纜車有限公司---Peak Tramway Company Ltd., 工務司署---Public Works Department, 運輸科---Transport Branch

相關字眼
 山頂區 ---Peak District, 山頂官地 ---Peak Crown Land, 凌峰閣/凌霄閣---Peak Tower, 堅尼地道站---Kennedy Road Station, 寶雲道站---Bowen Road Station, 白加道站---Barker Road Station, 種植道站---Plantation Road Station, 梅夫人婦女會---Helena May Institute, 梅道橋---May Road Bridge

相關字眼
 山頂纜車總站---Peak Tram Terminus, 山頂纜車站---Peak Tram Station, 山頂纜車上站---Upper Terminus, 山頂纜車下站---Lower Terminus, 山頂纜車遊---Peak Tram Tour

歷史檔案(例子)

- HKRS70-3-367: Peak Trams and Peak Tram Stations (Review), 1954-73
- HKRS70-7-124-2: Peak Trams and Peak Tram Stations – ENCL, 1974-75
- HKRS896-1-97: Upper Peak Tram Station and District Development, 1957-63
- HKRS58-1-9-64: Crown Land at Tramway Terminus, Peak – Forwarding Two Applications, One from Tramway Company and One from Mr. A. Findlay Smith for , 1894
- HKRS156-1-1186: Accommodation for Labourers in the Peak District – Rehabilitation of the Chair Coolies Quarters near the Peak Tram Terminus as, 1948-52
- HKRS58-1-37-1: New Peak Tramway – Draft Agreement with Peak Tramway’s Company for Sale of Crown Land, 1906-08
- HKRS365-1-32-1: Transport in Hong Kong - [A Peak Tram Approaching the Upper Terminus, 1956], 1956
- HKRS156-1-6530: Kennedy Road Peak Tram Bridge - Reconstruction of , 1957-59

- HKRS156-1-4817: The Peak Tramways - 1. Grant of a Permit to the Hong Kong Peak Tramway Co. Ltd. for the Occupation of Crown Land 2. Charging of Royalties, 1955-56
- HKRS337-4-5705: 1 Kiosk Upper Tram Station, H.K. T.T.H.E. 958/72 - Application for Exemption under Section 38 of the Landlord and Tenant Ordinance (CAP. 255) in respect of..., 1973
- HKRS163-1-2019: Murray Parade Ground - Future of....(A) Proposal to Build a Hotel (B) Proposal to Build a Multi-storey Car Park (C) Proposal to Extend the Peak Tram Terminus, 1957-60
- HKRS58-1-138-62: R.B.L. 311, The Peak - Application from the Peak Tramway Company for a Piece of Land Upon which to Erect a Workshop in Connection with the Peak Tram Service, 1926-40
- HKRS58-1-16-58: Path Through Crown Land from the Upper Tram Station to Bishop’s Lodge – Application for Permission to Open A , 1900

- HKRS58-1-22-42: Tram Station, Plantation Road - Improvement of the , 1903-06
- HKMS79-1-4: Peak Tram Passing the Barker Road Station. 1 Jan., 1921 (Lodged in the P.R.O. Miscellaneous Photographs Collection. (AT No. 2/4/83)) (Review)
- HKMS79-1-23: Season Ticket Peak Tramways Co. Ltd., 1922-23 (Review)

政府刊物(例子)

- Inspection of Stock of Peak Tramway Company, 1887, CO 129/234 pp70-79
- Surveys for Peak Tramway Company, 1888, CO 129/237 pp13-15
- Tramway to the Peak, 1903, CO 129/319 pp519-527

非政府刊物(例子)

- Arnold John: *Hong Kong's Famous Funicular: The Peak Tramway 1888-1978*, 1978 (388.46 ARN)